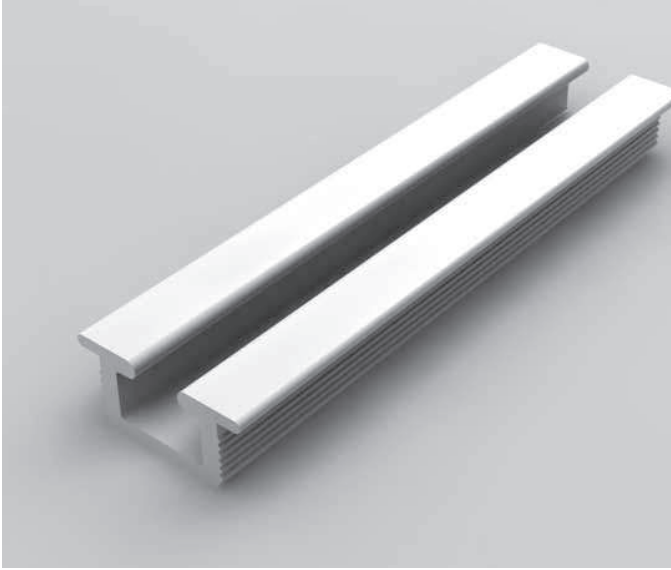
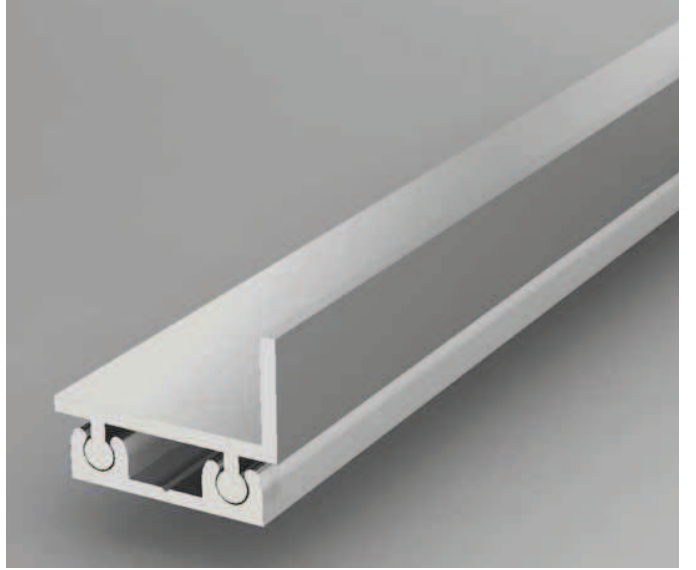


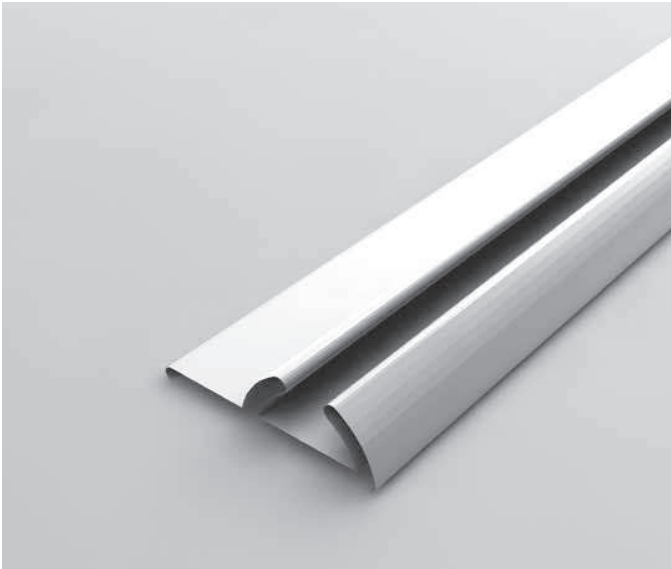
ER 1583



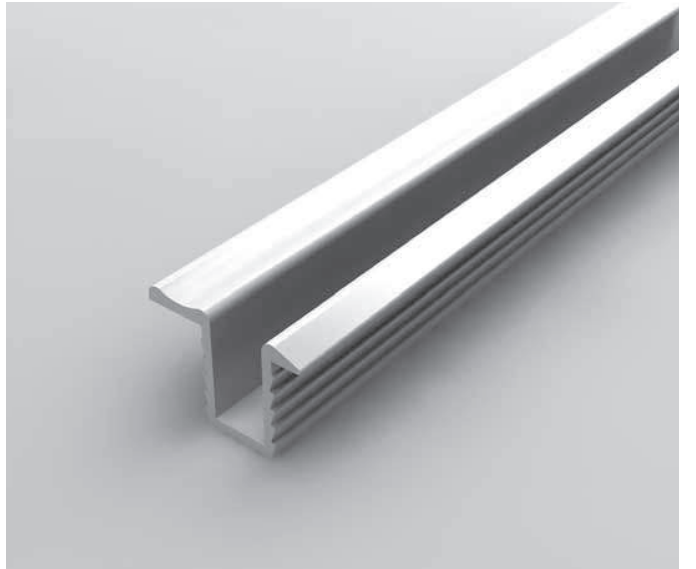
ER 1786



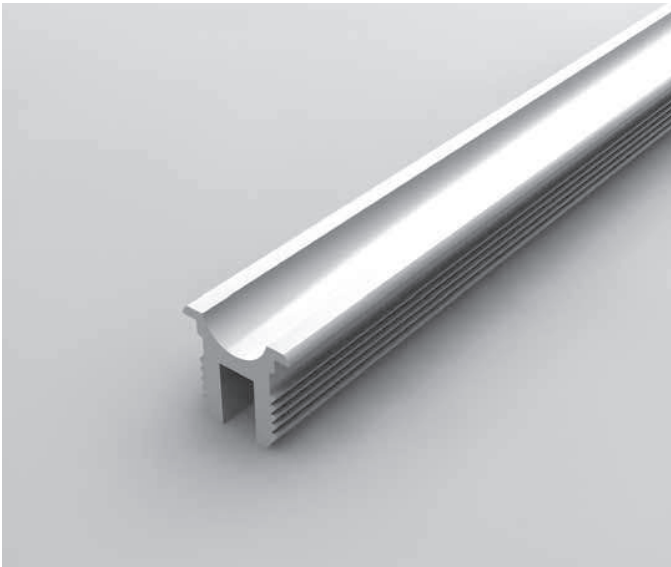
ER 1897



ER 1900

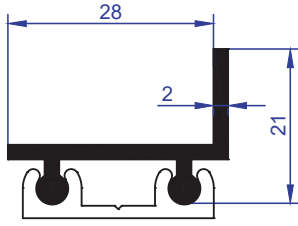


ER 1901



ER 3821

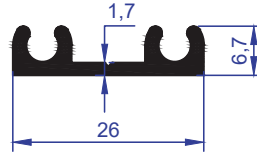




ER 1786

AĞIRLIK
WEIGHT : 0,338 kg/m

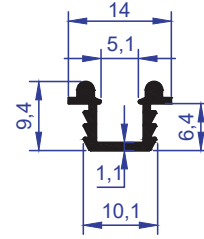
Taşıyıcı Üst Ray
Carrier Upper Rail



ER 1787

AĞIRLIK
WEIGHT : 0,243 kg/m

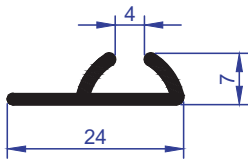
Alt Ray / Lower Rail



ER 2022

AĞIRLIK
WEIGHT : 0,113 kg/m

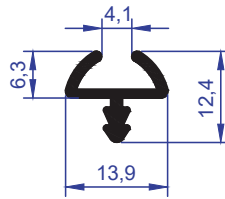
Alt Ray / Lower Rail



ER 1897

AĞIRLIK
WEIGHT : 0,163 kg/m

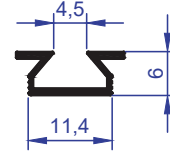
Alt Ray / Lower Rail



ER 3821

AĞIRLIK
WEIGHT : 0,172 kg/m

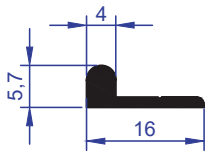
Alt Ray / Lower Rail



ER 4220

AĞIRLIK
WEIGHT : 0,084 kg/m

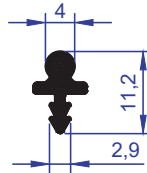
Alt Üst Ray / Lower - Upper Rail



ER 1969

AĞIRLIK
WEIGHT : 0,105 kg/m

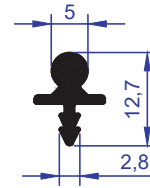
Alt Ray / Lower Rail



ER 1100

AĞIRLIK
WEIGHT : 0,105 kg/m

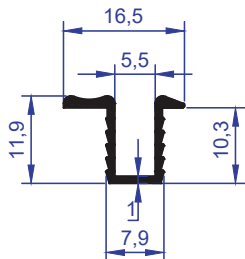
Tekli Alt Ray
Single Lower Rail



ER 1099

AĞIRLIK
WEIGHT : 0,129 kg/m

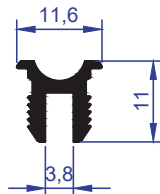
Tekli Alt Ray
Single Lower Rail



ER 1900

AĞIRLIK
WEIGHT : 0,118 kg/m

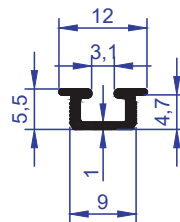
Alt Ray / Lower Rail



ER 1901

AĞIRLIK
WEIGHT : 0,139 kg/m

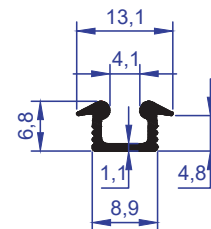
Alt Ray / Lower Rail



ER 1583

AĞIRLIK
WEIGHT : 0,078 kg/m

Alt Üst Gömme Ray
Lower - Upper Built-in Rail



ER 5860

AĞIRLIK
WEIGHT : 0,087 kg/m

Alt Üst Gömme Ray
Lower - Upper Built-in Rail